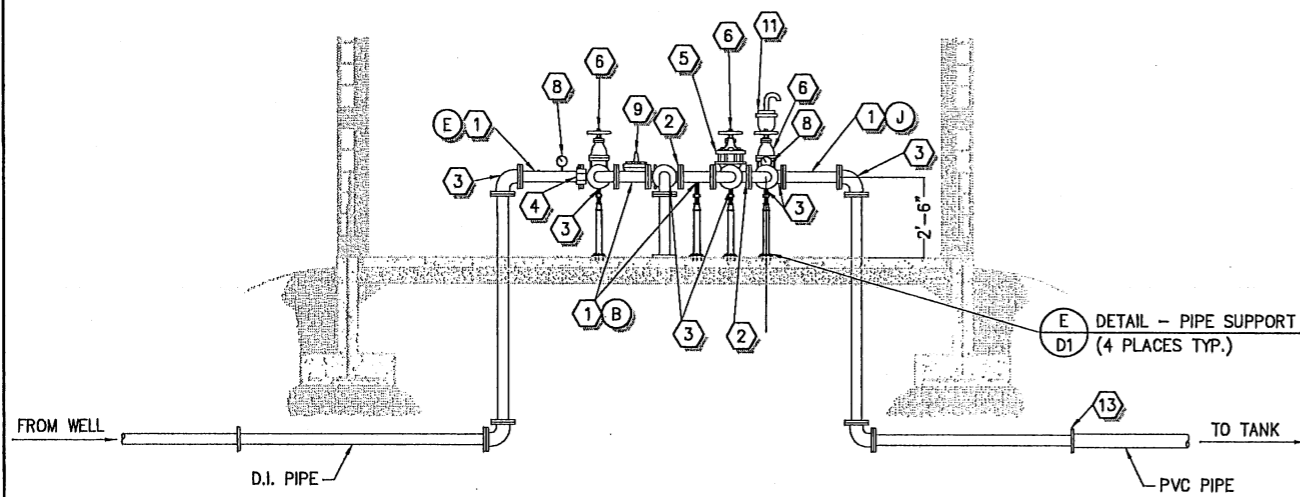
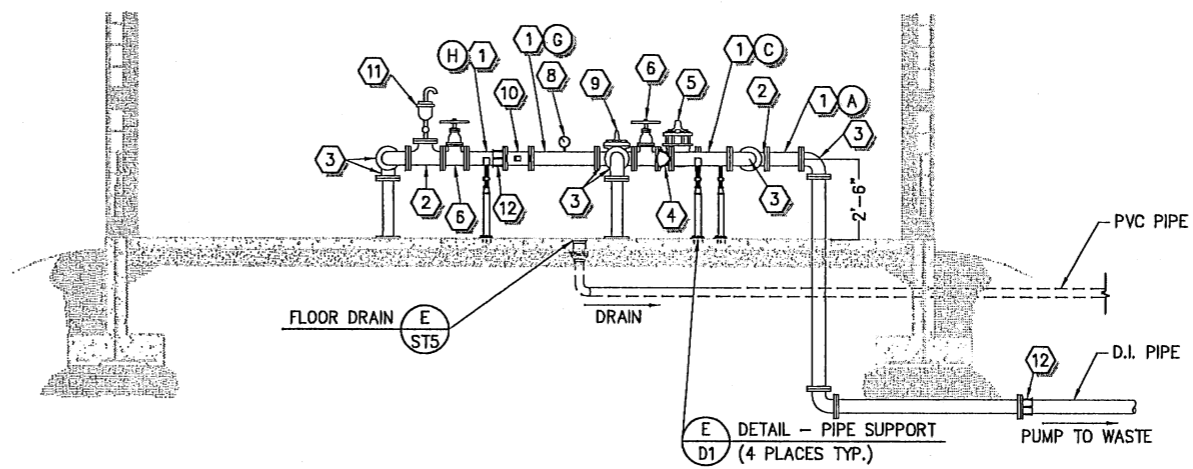


**A** PLAN - WELL HOUSE  
MP NTS



**B** SECTION - WELL HOUSE  
MP NTS



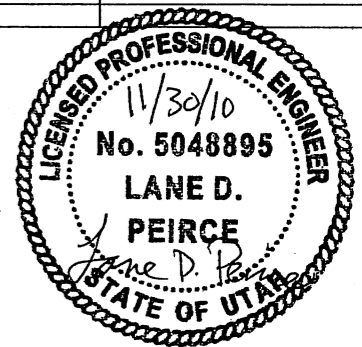
**C** SECTION - WELL HOUSE  
MP NTS

PIPING LAYOUT SCHEDULE			
NO.	DESCRIPTION	SIZE	REMARKS
1	DUCTILE IRON PIPE SPOOL	-	SEE PIPE SPOOL TABLE
2	DUCTILE IRON TEE	4"	FL x FL
3	DUCTILE IRON 90° ELBOW	4"	FL x FL
4	MOTORIZED BUTTERFLY VALVE - VALMATIC MODEL 2004 AWWA C-504 BUTTERFLY VALVE	4"	ROTORK CONTROLS MODEL IQT-125 ELECTRIC MOTOR ACTUATOR
5	PRESSURE RELIEF VALVE	4"	CLA-VAL MODEL # 50-01 (GLOBE)
6	GATE VALVE	4"	HAND WHEEL OPERATOR
7	NOT USED	-	-
8	PRESSURE GAUGE WITH 1/2" BALL VALVE	-	D - 150 PSI OIL FILLED (A D1)
9	CHECK VALVE	4"	CLA-VAL MODEL # 81-02
10	MAGNETIC FLOW METER	4"	SEIMONS MAG 5100W WITH MAG 5000 SIGNAL CONNECTOR
11	COMBINATION AIR / VACUUM RELIEF VALVE	1"	APCO 143C ROUTE VENT TO FLOOR WITH AIR GAP (D D1)
12	FLANGE COUPLING ADAPTOR	4"	-
13	TRANSITION COUPLING	4"	4" MJ x 4" 150 LBS. FLANGE

NOTES:

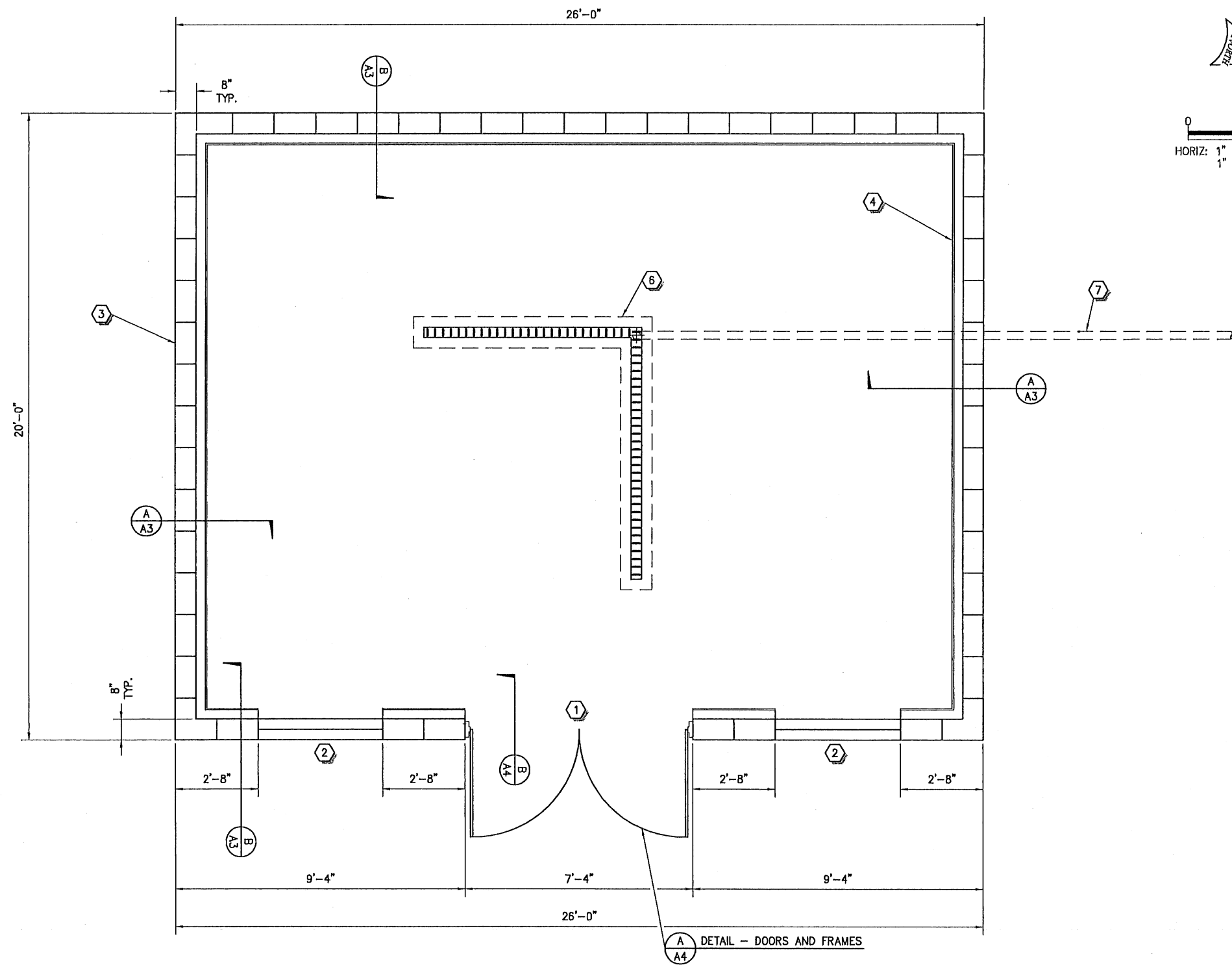
1. ALL DIMENSIONS AND CALLOUTS ARE APPROXIMATE.
2. ALL PIPING SHALL BE PAINTED BLUE FOR WATER LINES AND BROWN FOR DISCHARGE LINES SHERWIN WILLIAMS, METALUX, OR APPROVED EQUAL.
3. ALL BOLTS FOR FLANGED CONNECTIONS SHALL BE STAINLESS STEEL.
4. MIN. 2% SLOPE ON PVC DRAIN

PIPE SPOOL LENGTH				
	SIZE	LENGTH	QUANTITY	NOTES
A	4"	1'-0"	1	FLANGE x FLANGE
B	4"	1'-0"	2	FLANGE x FLANGE
C	4"	1'-10"	1	FLANGE x FLANGE
D	4"	1'-0"	1	FLANGE x FLANGE
E	4"	1'-10"	1	FLANGE x FLANGE
F	4"	1'-10"	1	FLANGE x PLAIN END
G	4"	2'-1"	1	FLANGE x FLANGE
H	4"	1'-4"	1	FLANGE x PLAIN END
J	4"	1'-0"	1	FLANGE x FLANGE



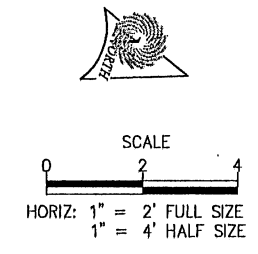
ALL BURIED D.I. PIPE SHALL BE WRAPPED IN PLASTIC

REV. NO.	COMMENT	DATE
 <b>SUNRISE ENGINEERING</b> 12227 SOUTH BUSINESS PARK DRIVE, SUITE 220 DRAPER, UTAH 84020 TEL 801.523.0100 • FAX 801.523.0990 www.sunrise-eng.com		
<b>CROYDON PIPELINE COMPANY</b> <b>HILL TOP WELL #1</b> <b>MECHANICAL PIPING</b>		
SEI NO. 03562	DESIGNED LDP	DRAWN AAD
CHECKED LDP	SHEET NO. 6 of 30	MP



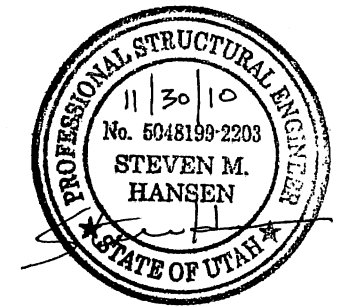
**ARCHITECTURAL NOTES**

- ① 7'-4" x 7'-4" OPENING FOR DOUBLE DOOR
- ② 4'-0" x 3'-0" WINDOW
- ③ 8" x 8" x 16" CMU WALL SPLIT FACE & CENTER SCORE. PER SHEET A2
- ④ FRAMED WALL 2" x 4" STUDS @ 16" O.C. WITH R-13 BATT INSULATION AND 5/8" MOISTURE RESISTANT GYPSUM BOARD ON ALL INTERIOR WALLS (TYP.)
- ⑤ NOT USED
- ⑥ ABT POLYDRAIN DRAINAGE SYSTEM WITH SLOTTED GRATE OR APPROVED EQUAL. (E) ST5
- ⑦ 3" PVC DRAIN PIPE



**A PLAN - BOOSTER PUMP FLOOR PLAN**

**A** DETAIL - DOORS AND FRAMES



REV. NO.	COMMENT	DATE

**SUNRISE ENGINEERING**  
 12227 SOUTH BUSINESS PARK DRIVE, SUITE 220  
 DRAPER, UTAH 84020  
 TEL 801.523.0100 • FAX 801.523.0990  
 www.sunrise-eng.com

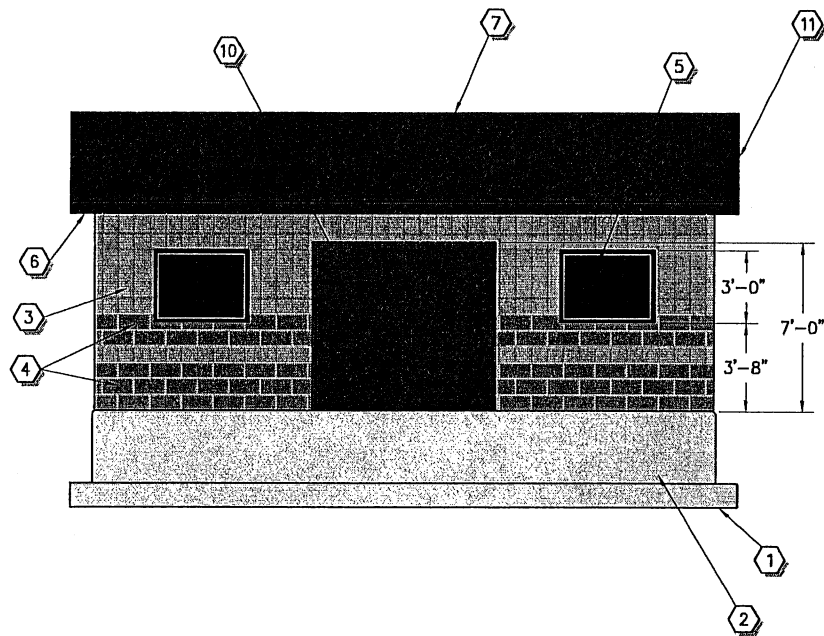
**CROYDON PIPELINE COMPANY**  
**HILL TOP WELL #1**  
**BOOSTER PUMP BUILDING**

SET NO.	DESIGNED	DRAWN	CHECKED	SHEET NO.	
03562	LDP	AAD	LDP	7 of 30	<b>A1</b>

P:\Croydon\03562\_Croydon Well\Design3D\Sheets\CROY-A.dwg Nov 24, 2010 11:35am ipelrice

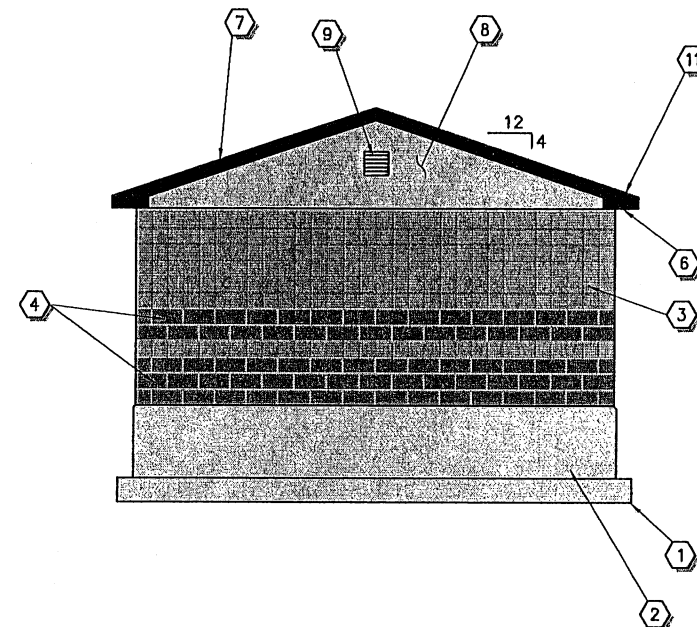
**ARCHITECTURAL NOTES**

- 1 CONCRETE FOOTINGS
- 2 CONCRETE FOUNDATION WALL WITH DAMP-PROOFING MEMBRANE EXTENDED MINIMUM 6" ABOVE FINISHED GRADE.
- 3 8"x 8"x 16" CENTER SCORE CMU BLOCK, TAN (TYP.)
- 4 8"x 8"x 16" SPLIT FACE CMU BLOCK, BROWN (TYP.)
- 5 (2) 4'-0"x 3'-0" SECURITY WINDOWS
- 6 SOFFIT TO MATCH ROOFING
- 7 STANDING SEAM METAL ROOFING AND FACIA, FOREST GREEN (TYP.)
- 8 TAN STUCCO
- 9 STANDARD WALL VENT
- 10 7'-0"x 7'-0" DOUBLE DOOR
- 11 PROVIDE ICE AND WATER SHIELD AT ALL EAVES AND VALLEYS

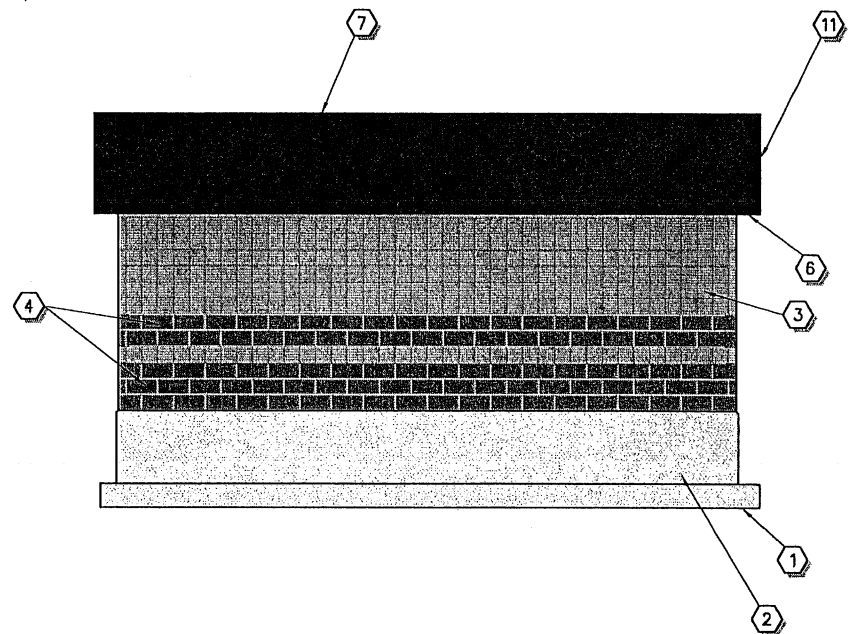


**A** ELEVATION - SOUTH SIDE  
~  
NTS

FINISHED FLOOR ELEVATION: 5511.00  
TOP OF FOOTING ELEVATION: 5508.00

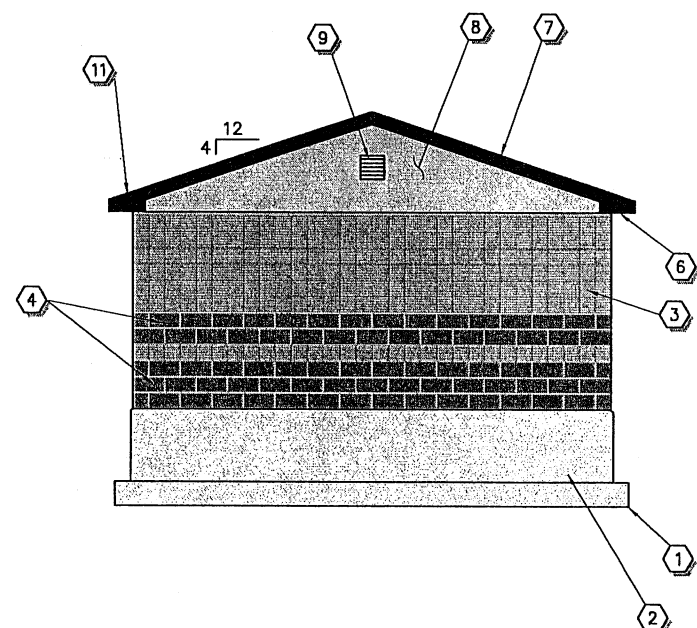


**B** ELEVATION - EAST SIDE  
~  
NTS




**C** ELEVATION - NORTH SIDE  
~  
NTS

FINISHED FLOOR ELEVATION: 5511.00  
TOP OF FOOTING ELEVATION: 5508.00



**D** ELEVATION - WEST SIDE  
~  
NTS

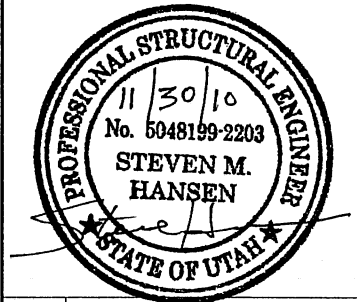


REV. NO.	COMMENT	DATE
 <b>SUNRISE ENGINEERING</b> 12227 SOUTH BUSINESS PARK DRIVE, SUITE 220 DRAPER, UTAH 84020 TEL 801.523.0100 • FAX 801.523.0990 www.sunrise-eng.com		
<b>CROYDON PIPELINE COMPANY</b> <b>HILL TOP WELL #1</b> <b>BOOSTER PUMP BUILDING</b>		
SET NO. 03562	DESIGNED LDP	DRAWN AAD
CHECKED LDP	SHEET NO. 8 of 30	<b>A2</b>

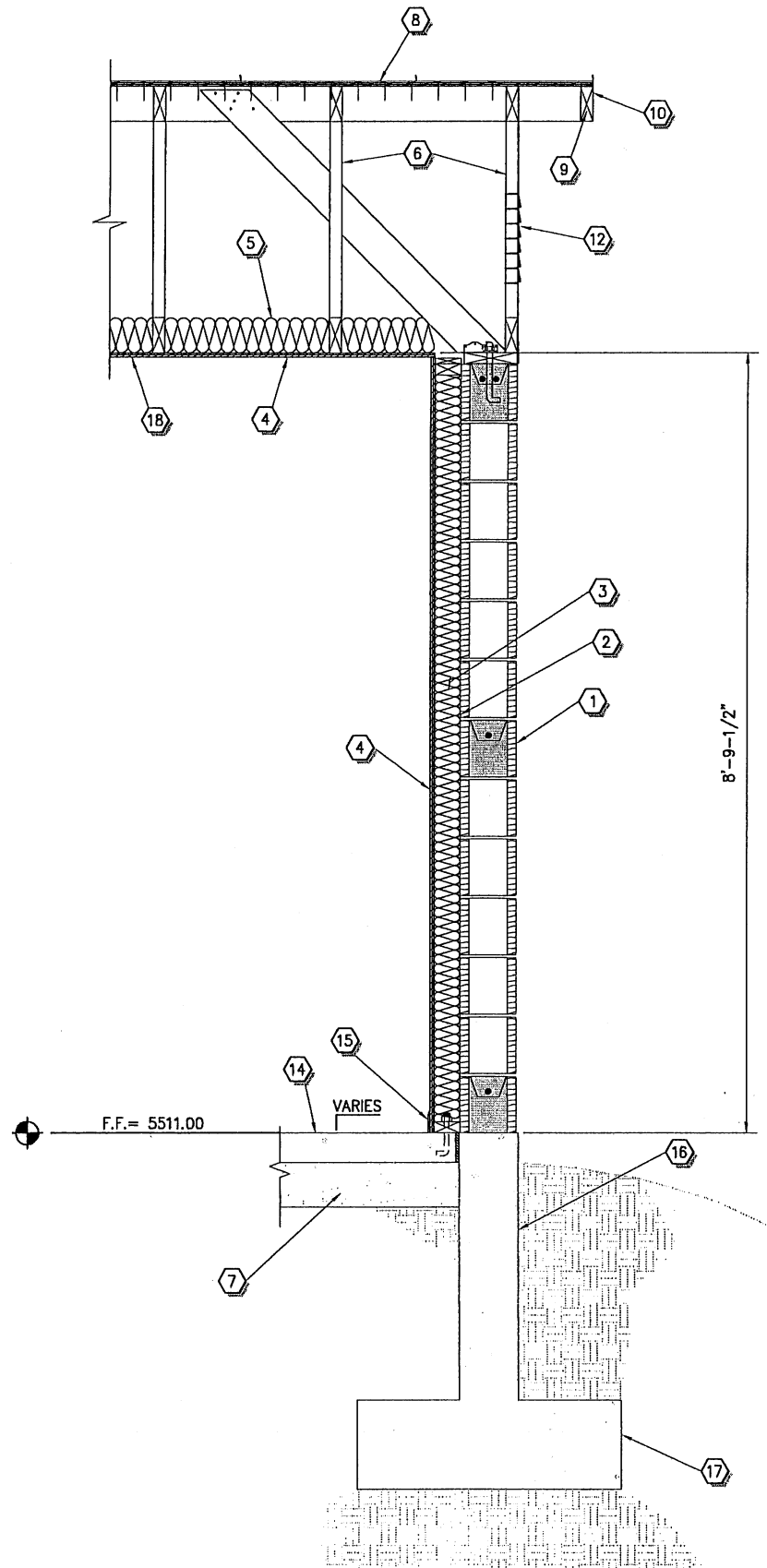
P:\Croydon\03562 Croydon Well\Design\3D\Sheets\CROY-A.dwg Nov 24, 2010 11:35am lp@rice

**ARCHITECTURAL NOTES**

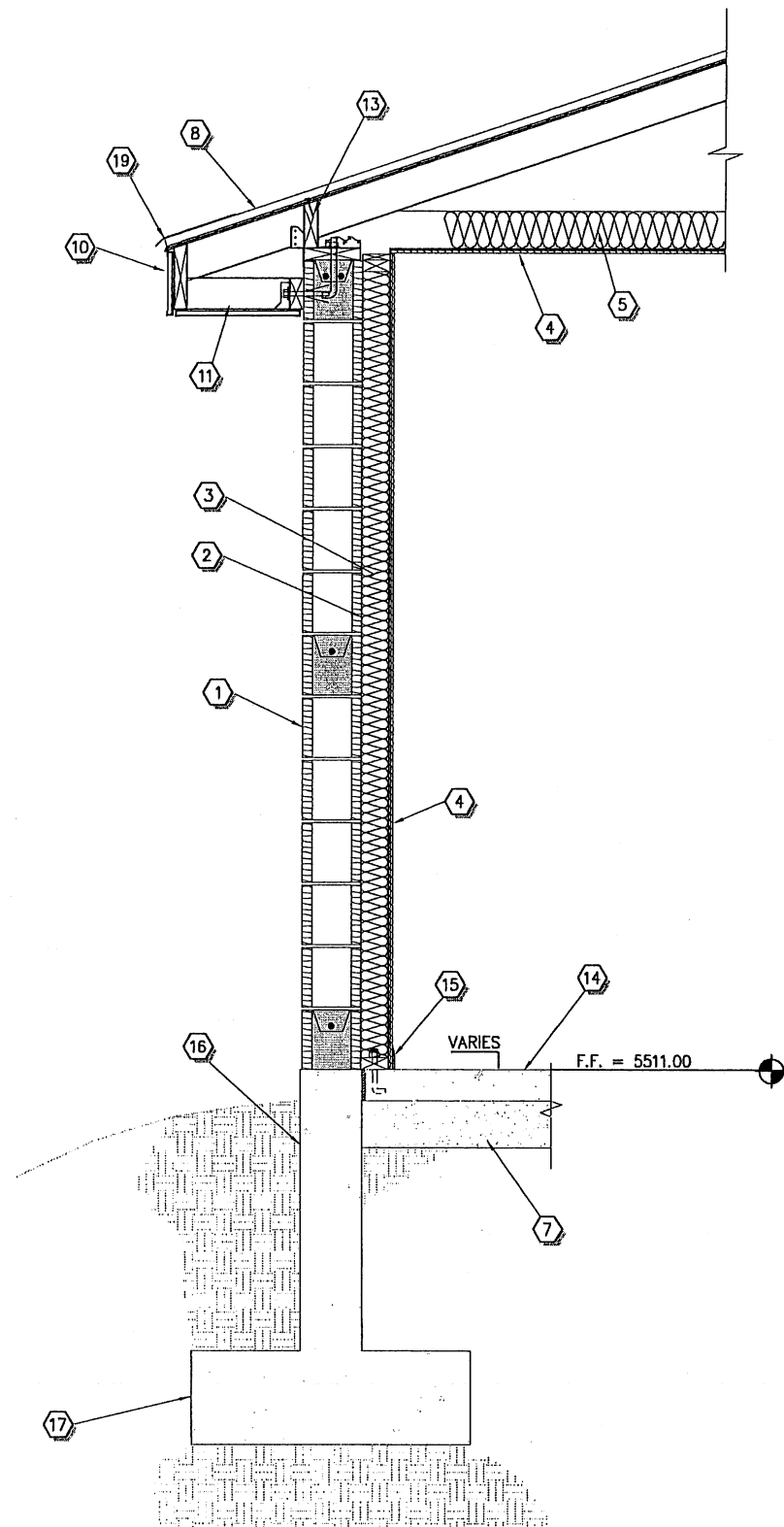
- ① 8"x 8"x 16" CMU WALL SPLIT FACE & CENTER SCORE.
- ② 2x4 WALL STUDS AT 16" O.C.
- ③ R-13 BATT INSULATION
- ④ 5/8" MOISTURE RESISTANT GYPSUM BOARD
- ⑤ R-48 FIBERGLASS BATT INSULATION
- ⑥ PRE-FABRICATED TRUSSES AT 24" O.C.
- ⑦ 6" STRUCTURAL FILL COMPACTED TO 95%
- ⑧ FOREST GREEN STANDING SEAM METAL ROOFING INSTALLED PER MANUFACTURERS SPECIFICATIONS
- ⑨ 2x6 FACIA BLOCK. PAINTED TO MATCH ROOF
- ⑩ METAL FACIA TO MATCH ROOFING
- ⑪ VENTED EXTERIOR SOFFIT SURFACE TO MATCH ROOFING. SEE NOTES
- ⑫ STANDARD WALL VENT
- ⑬ OMIT 3 BLOCKS EACH SIDE OF BUILDING FOR VENTING
- ⑭ SLOPE FLOOR TO FLOOR DRAIN 1/8" PER FOOT
- ⑮ PLAS-TEX® DURO BASE BOARD OR APPROVED EQUAL ALONG INTERIOR OF WALL
- ⑯ CONCRETE FOUNDATION WALL WITH DAMP-PROOFING MEMBRANE EXTENDED MINIMUM 6" ABOVE FINISHED GRADE
- ⑰ CONCRETE FOOTING
- ⑱ 22" x 30" ATTIC ACCESS PER DETAIL "E" ON SHEET A4
- ⑲ PRE FINISHED METAL DRIP EDGE BETWEEN ICE SHIELD AND WATER SHIELD.



NOTE:  
METAL SOFIT AND FASCIA SHALL NOT BE LESS THAN 26-GA. GALVANIZED STEEL WITH INTERLOCKING FLUSH PANEL SEAMS.



**A** SECTION - NORTH/SOUTH SIDE  
A1 NTS



**B** ELEVATION - EAST/WEST SIDE  
A1 NTS

REV. NO.	COMMENT	DATE

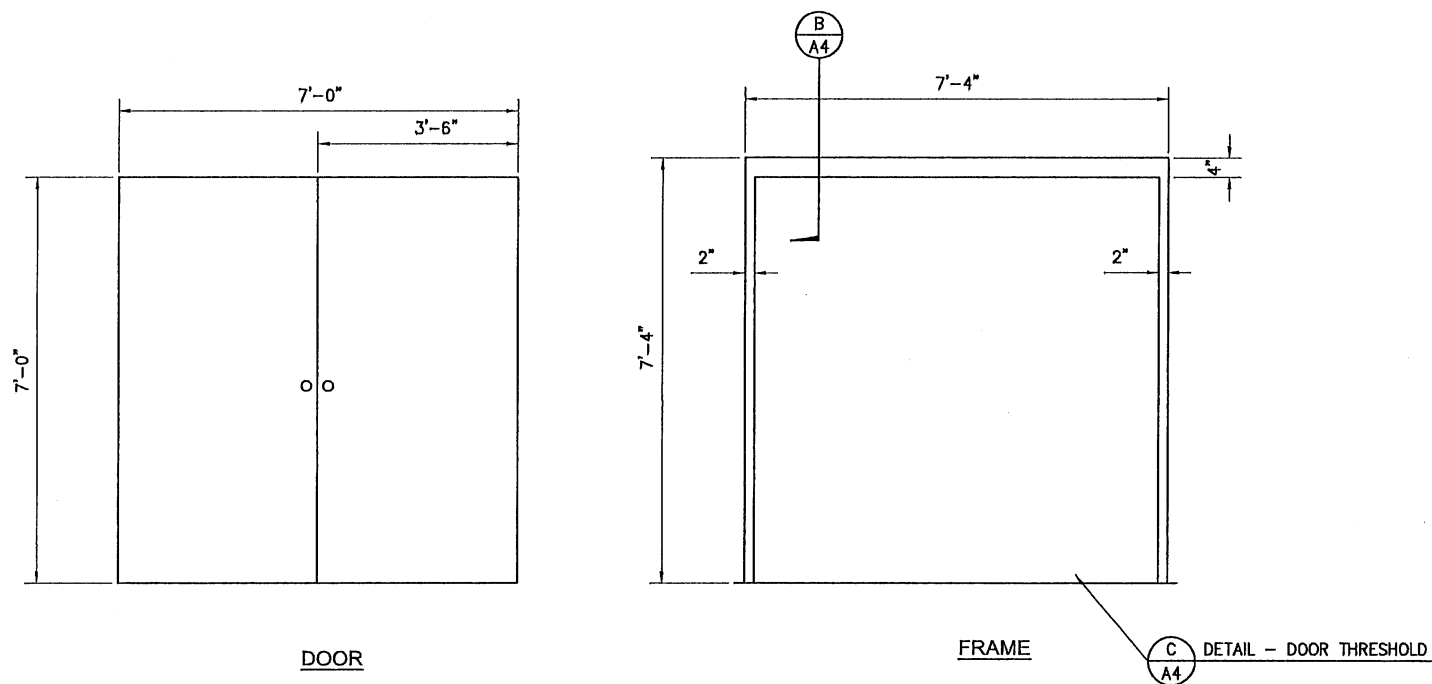
**SUNRISE ENGINEERING**  
12227 SOUTH BUSINESS PARK DRIVE, SUITE 220  
DRAPER, UTAH 84020  
TEL 801.523.0100 • FAX 801.523.0990  
www.sunrise-eng.com

**CROYDON PIPELINE COMPANY**

**HILL TOP WELL #1  
BOOSTER PUMP BUILDING  
TYPICAL WALL SECTIONS**

SEI NO. 03562	DESIGNED LDP	DRAWN AAD	CHECKED LDP	SHEET NO. 9 of 30	A3
------------------	-----------------	--------------	----------------	----------------------	----

P:\Croydon\03562 Croydon Well\Design3D\Sheets\CR07-A.dwg Nov 24, 2010 11:35am lpaice



DOOR

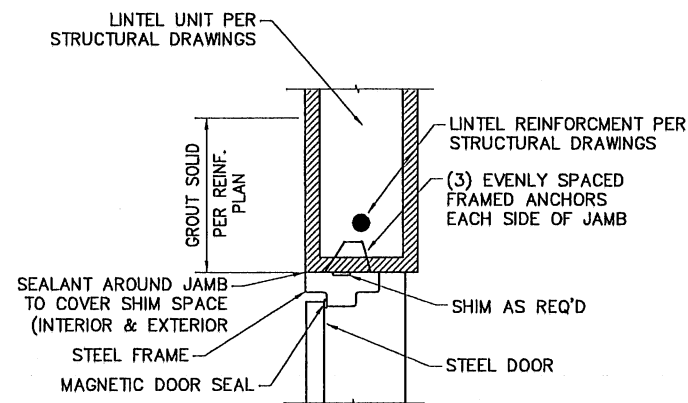
FRAME

C  
A4  
DETAIL - DOOR THRESHOLD

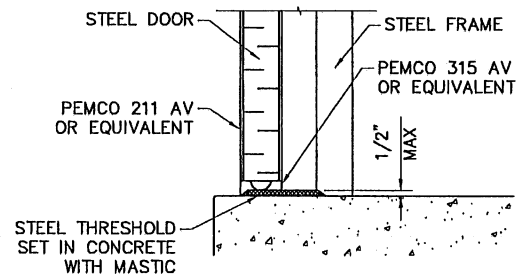
**A**  
A1  
DETAIL - DOOR AND FRAME  
SCALE: N.T.S.

**NOTES:**

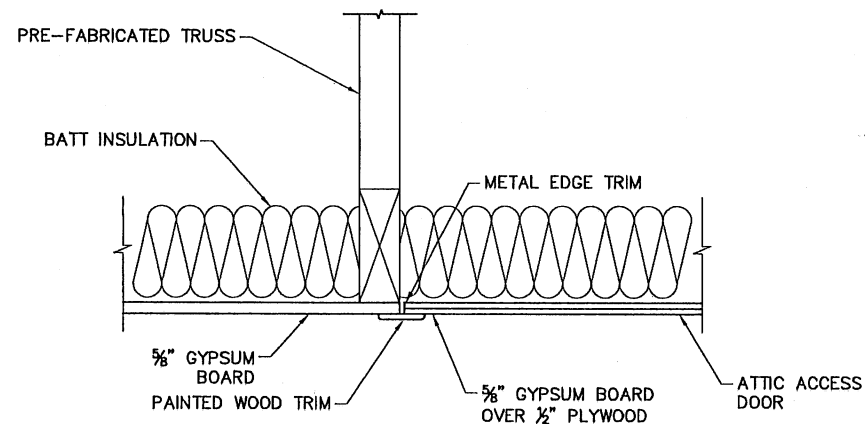
1. DOOR AND FRAME SHALL BE STEEL WITH OVEN BAKED FINISH.
2. FINISH COLOR: TO BE DETERMINED BY ENGINEER.
3. SEE SPECIAL PROVISIONS SECTION SP00B100 FOR DOOR TYPES.
4. DOOR HEIGHT MAY BE RAISED TO MATCH FLUSH WITH CMU WALL AT CONTRACTORS EXPENSE.



**B**  
A4  
DETAIL - DOOR HEAD AND DOOR JAMB  
SCALE: N.T.S.



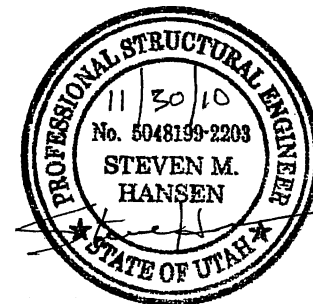
**C**  
A4  
DETAIL - DOOR THRESHOLD  
SCALE: N.T.S.



**E**  
TYP  
DETAIL - ATTIC ACCESS  
SCALE: N.T.S.

**NOTE:**

ATTIC ACCESS OPENING SHALL NOT BE LESS THEN 22"X30" PROVIDE 30" CLEAR HEADROOM IN ATTIC SPACE AT OR ABOVE THE ATTIC OPENING.



REV. NO.	COMMENT	DATE



12227 SOUTH BUSINESS PARK DRIVE, SUITE 220  
DRAPER, UTAH 84020  
TEL 801.523.0100 • FAX 801.523.0990  
www.sunrise-eng.com

CROYDON PIPELINE COMPANY

HILL TOP WELL #1  
BOOSTER PUMP BUILDING  
TYPICAL DETAILS

REV. NO.	DESIGNED	DRAWN	CHECKED	SHEET NO.	
03562	LDP	AAD	LDP	10 of 30	A4

P:\Croydon\03562 Croydon Well\Design\30\Sheets\CROY-A.dwg Nov 24, 2010 11:35am lpaice