

# ADDENDUM

**TAYLORSVILLE-BENNION IMPROVEMENT DISTRICT  
3900 SOUTH SEWER LIFT STATION REHABILITATION**  
CRS Project No. 10023C

## **ADDENDUM No. 1**

**Issued:** May 11, 2011

**Bid date:** May 17, 2011

**Bid time:** 2:00 p.m. Mountain Daylight Time

---

*This Addendum shall be considered part of the Contract Documents and Project Manual for the above referenced project as though it had been issued at the same time and shall be incorporated integrally therewith. Where provisions of the following supplementary data differ from those of the original Contract Documents and Project Manual, the Addendum shall govern and take precedence.*

---

### **BID TIME:**

The Bid opening time shall be changed to **2:00 PM** Mountain Daylight Time.

### **BID FORM**

1. 5.01 Bid Schedule
  - a. Items 10a and 10b clarification: Quantities provided in Bid Schedule are estimated for all surface area to be treated with epoxy protective lining. This includes surfaces requiring structural rehabilitation and surfaces which may not require structural rehabilitation.

### **DRAWINGS**

1. **C-100**
  - a. 96" Sewer Manhole Detail callout shall change from 8/C-104 to 8/C-105.
2. **C-102**
  - a. Detail B/C-102: Change dimension width of gate from "VARIES 16' OR 8" SE CP101" to "20 FEET".
  - b. In the southeast corner of the project, Contractor is to spread, shape, and compact 200 cy of on-sight material.
3. **C-103**
  - a. Concrete staircase detail callout shall change from 1/C-103 to 1/C-104.
  - b. 72" sewer manhole detail callout shall change from 4/C-104 to 4/C-105.

- c. 6" PVC drain line trench detail callout shall change from 6/C-104 to 6/C-105.
- d. 6" landscape drain detail callout shall change from 7/C-104 to 7/C-105.
- e. Keystone landscape wall and 4" perforated drain line detail callouts shall change from 9/C-104 to 9/C-105.
- f. Section A/C-103 shall change to A/C-104.
- g. Section B/C-103 shall change to C/C-104.

**4. C-104**

- a. Retaining wall detail callout shall change from 13/S-100 to 15/S-100.

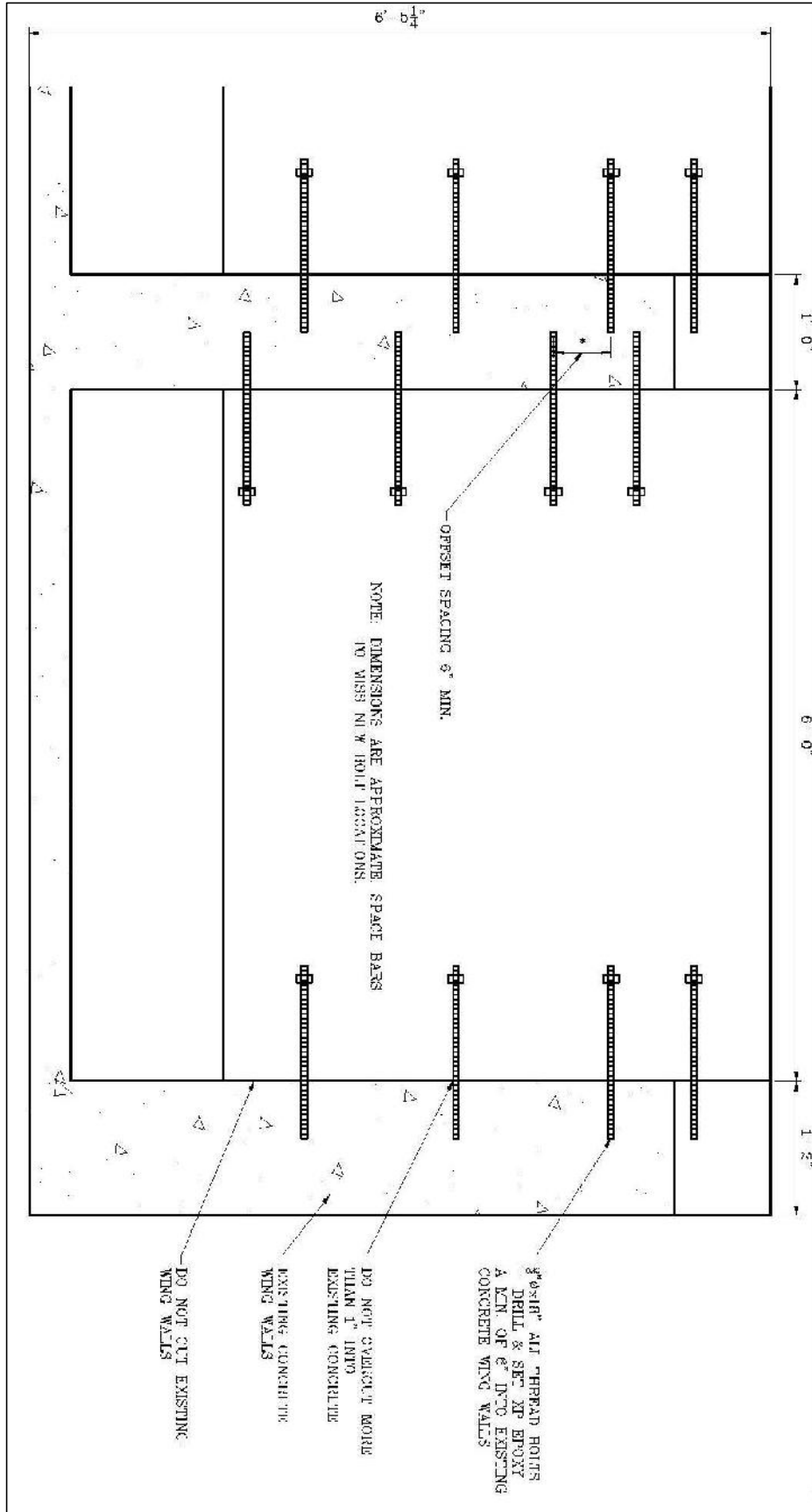
**5. M-101**

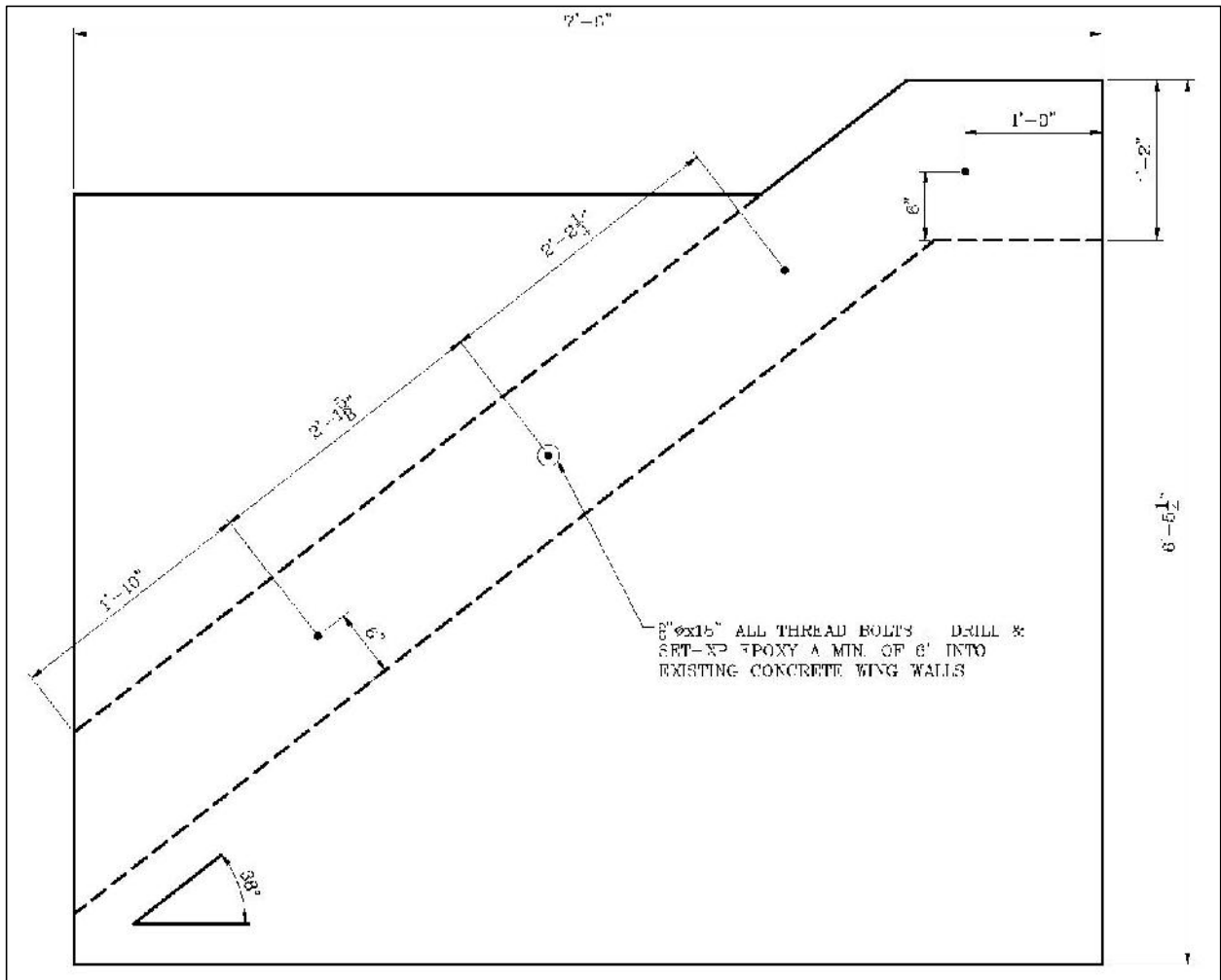
- a. From BASIN & TROUGH PLAN VIEW; Concrete Pillow Block detail callout change from 13/S-101 to A/M-101.
- b. Detail A/M-101: Replace DETAIL A - UPPER BEARING PILLOW BLOCK with attached **DETAILS A1, A2, and A3**
- c. Detail B/M-101: Replace DETAIL B – LOWER BEARING PILLOW BLOCK with attached **DETAIL B**

**6. S-100**

- a. Detail 15/S-100: Replace DETAIL 15 – CONCRETE RETAINING WALL with attached **DETAIL 15.**

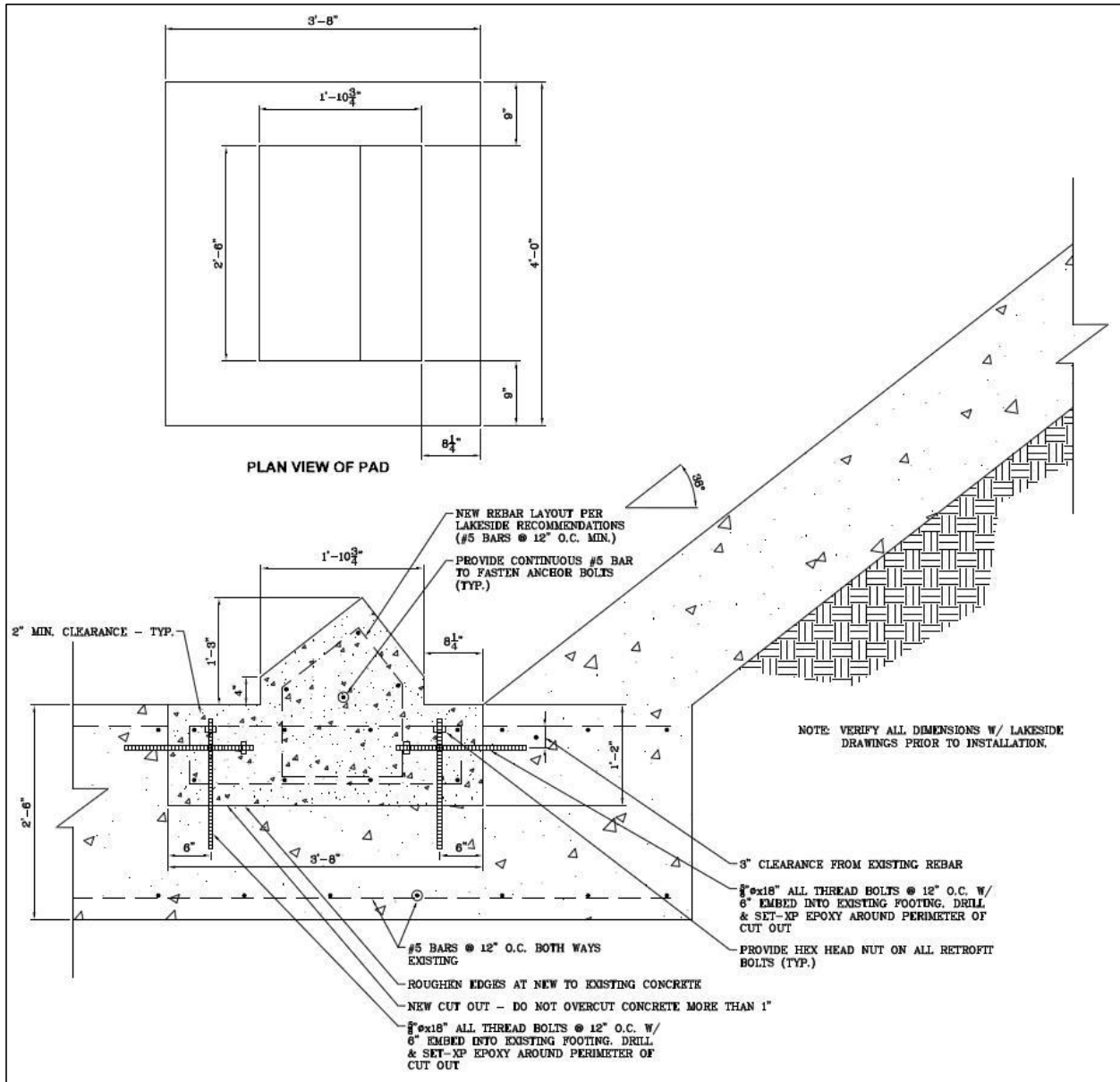
**DETAIL A1**  
**UPPER BEARING PILLOW BLOCK**  
 (TYPICAL FOR (3) PILLOW BLOCKS)



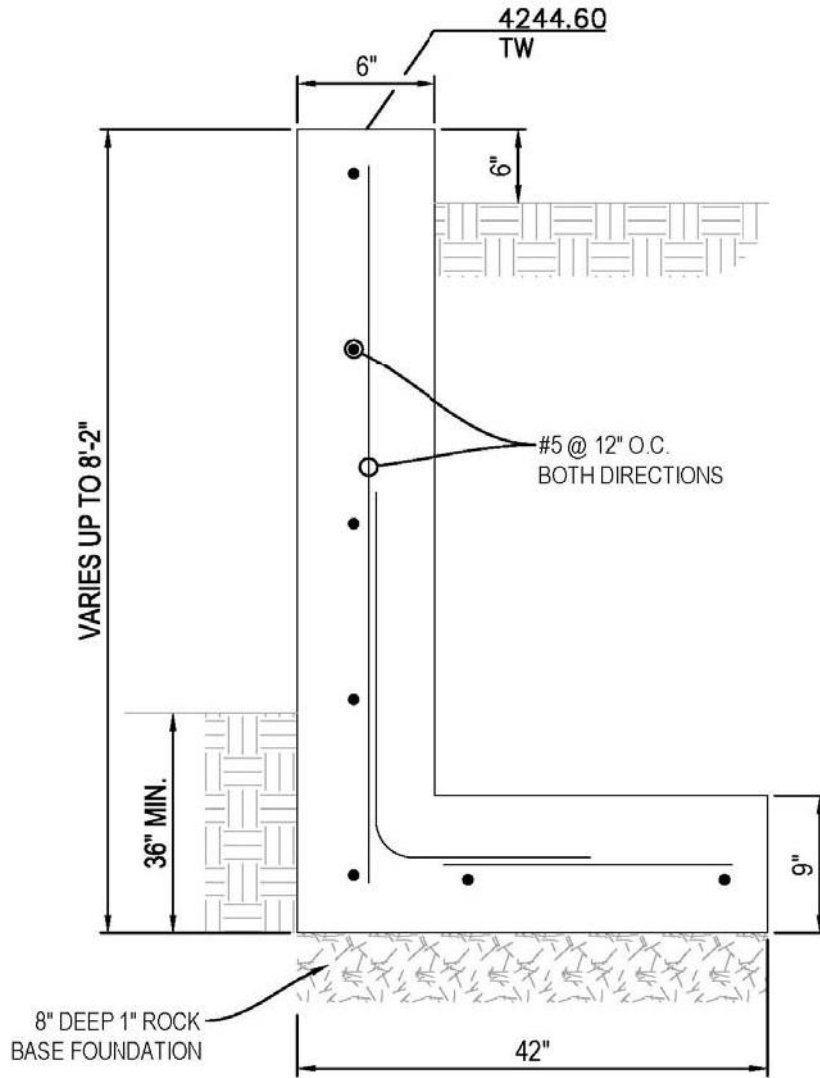


**DETAIL A2**  
**UPPER BEARING PILLOW BLOCK**  
 (TYPICAL FOR (3) PILLOW BLOCKS)





**DETAIL B**  
**LOWER BEARING PILLOW BLOCK**  
 (TYPICAL FOR (3) PILLOW BLOCKS)



15 CONCRETE RETAINING WALL  
S-100 SCALE: NONE

**DETAIL 15  
CONCRETE RETAINING WALL**